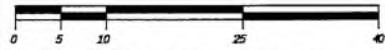


**SUBDIVISION PLAN OF LOT 12, PLAN KAP78928 AND PART OF LOT 8,
PLAN EPP97926, BOTH SECTION 24, TOWNSHIP 28, SIMILKAMEEN
DIVISION YALE DISTRICT**

PLAN EPP126882

PURSUANT TO SECTION 67 OF THE LAND TITLE ACT

BCGS 82E.083



The intended plot size of this plan is 560mm in width by 432mm in height (C size) when plotted at a scale of 1:400 (All distances are in metres)

LEGEND

- Denotes Standard Iron post (Type 5) found
- ⊙ Denotes Control Monument found

Integrated Survey Area No. 4 City of Kelowna, NAD83 (CSRS) 4.0.0.BC.1

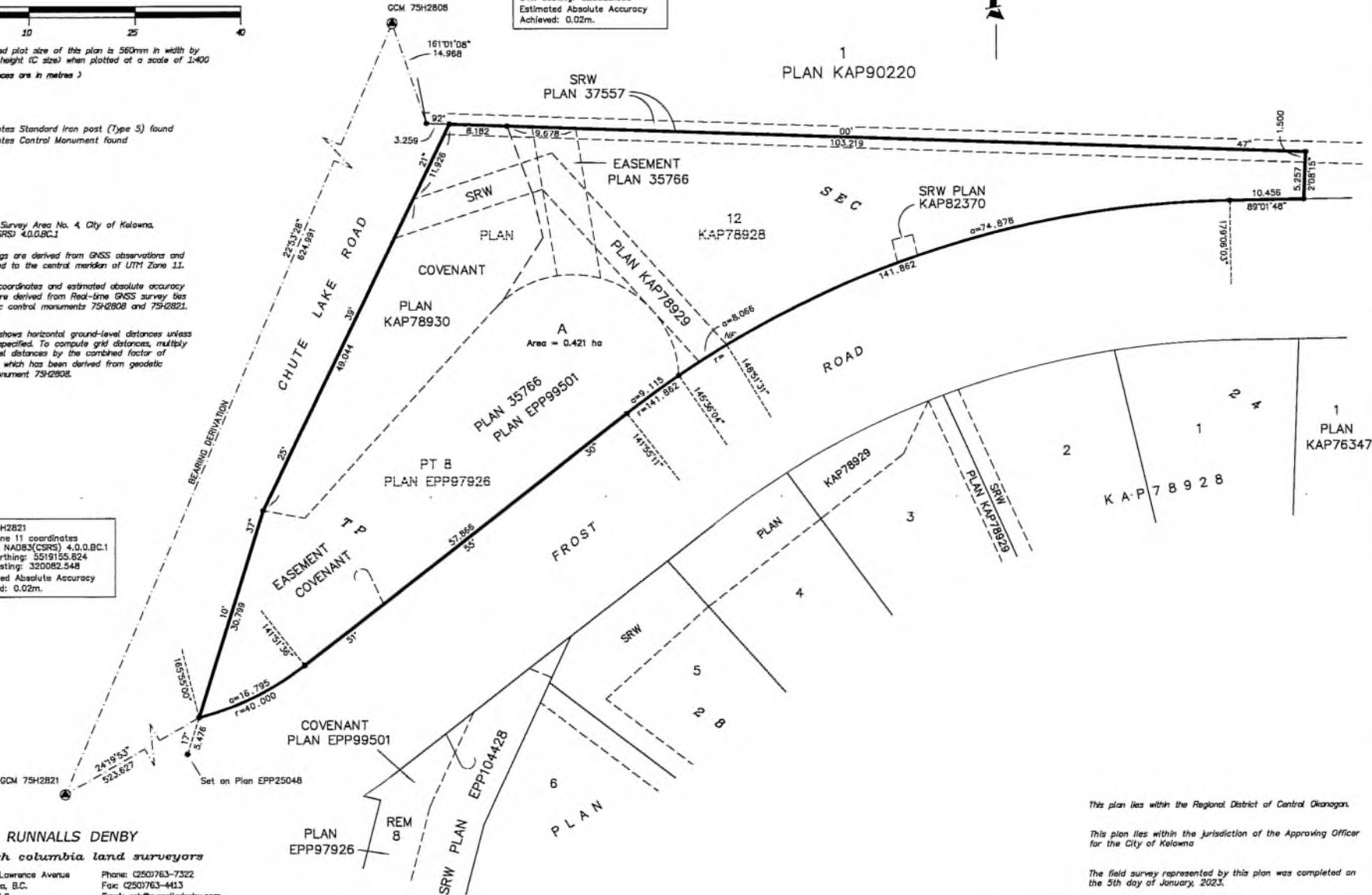
Grid bearings are derived from GNSS observations and are referred to the central meridian of UTM Zone 11.

The UTM coordinates and estimated absolute accuracy achieved are derived from Real-time GNSS survey bias to geodetic control monuments 75H2808 and 75H2821.

This plan shows horizontal ground-level distances unless otherwise specified. To compute grid distances, multiply ground-level distances by the combined factor of 0.9999282 which has been derived from geodetic control monument 75H2808.

GCM 75H2808
UTM Zone 11 coordinates
Datum: NAD83(CSRS) 4.0.0.BC.1
UTM northing: 5319731.553
UTM easting: 320325.639
Estimated Absolute Accuracy
Achieved: 0.02m.

GCM 75H2821
UTM Zone 11 coordinates
Datum: NAD83(CSRS) 4.0.0.BC.1
UTM northing: 5519155.824
UTM easting: 320082.548
Estimated Absolute Accuracy
Achieved: 0.02m.



RUNNALLS DENBY
british columbia land surveyors
259A Lawrence Avenue Kelowna, B.C. V1Y 6L2
Phone: (250) 763-7322 Fax: (250) 763-4413 Email: rob@runnallsdenby.com
Dwg. No.: 15936 SUBDIVISION FILE: 15936

This plan lies within the Regional District of Central Okanagan.
This plan lies within the jurisdiction of the Approving Officer for the City of Kelowna.
The field survey represented by this plan was completed on the 5th day of January, 2023.
Robert T. Macdonald, BCLS 873